



# WIJZERBELEGGEN

Beter beleggen als de beste professionals

Performance per 26 juni 2015

## S&P Index Trade Signalen

Afstand tot Stop-loss

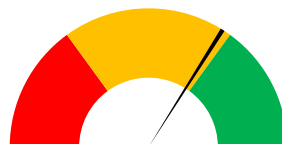
| Performance       |               |
|-------------------|---------------|
| Rendement 2012    | 29,7%         |
| Rendement 2013    | 127,3%        |
| Rendement 2014    | 50,5%         |
| Rendement YTD     | 12,5%         |
| Rendement overall | <b>399,3%</b> |



## DAX Index Trade Signalen

Afstand tot Stop-loss

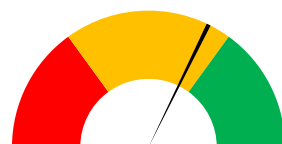
| Performance       |               |
|-------------------|---------------|
| Rendement 2012    | 45,6%         |
| Rendement 2013    | 76,2%         |
| Rendement 2014    | 2,5%          |
| Rendement YTD     | 39,3%         |
| Rendement overall | <b>266,2%</b> |



## AEX Index Trade Signalen

Afstand tot Stop-loss

| Performance       |               |
|-------------------|---------------|
| Rendement 2012    | 43,0%         |
| Rendement 2013    | 79,8%         |
| Rendement 2014    | 19,1%         |
| Rendement YTD     | 46,9%         |
| Rendement overall | <b>349,6%</b> |



## SMI Index Trade Signalen

Afstand tot Stop-loss

| Performance       |              |
|-------------------|--------------|
| Rendement 2012    | -            |
| Rendement 2013    | -            |
| Rendement 2014    | -            |
| Rendement YTD     | 49,0%        |
| Rendement overall | <b>49,0%</b> |

